



# Community Involvement Plan

Documents used:

- US Magnesium Superfund Site Community Involvement Plan

# Outline

- Goals of CIP
- Community Concerns
  - Current Knowledge of Site
  - Environmental Concerns
  - Superfund Stigma
  - Health Concerns
  - Economic Concerns
  - Remediation Concerns
  - Communication and Public Outreach
- FOGSL and Technical Assistance Grant



# Goals of CIP



- Inform and involve the public in the investigation and identification of the environmental issues associated with the site



# Goals of CIP



- Involve the public in the development of feasible remedial responses



# Goals of CIP



- Involve the public in the Superfund decision-making process to determine final remediation actions



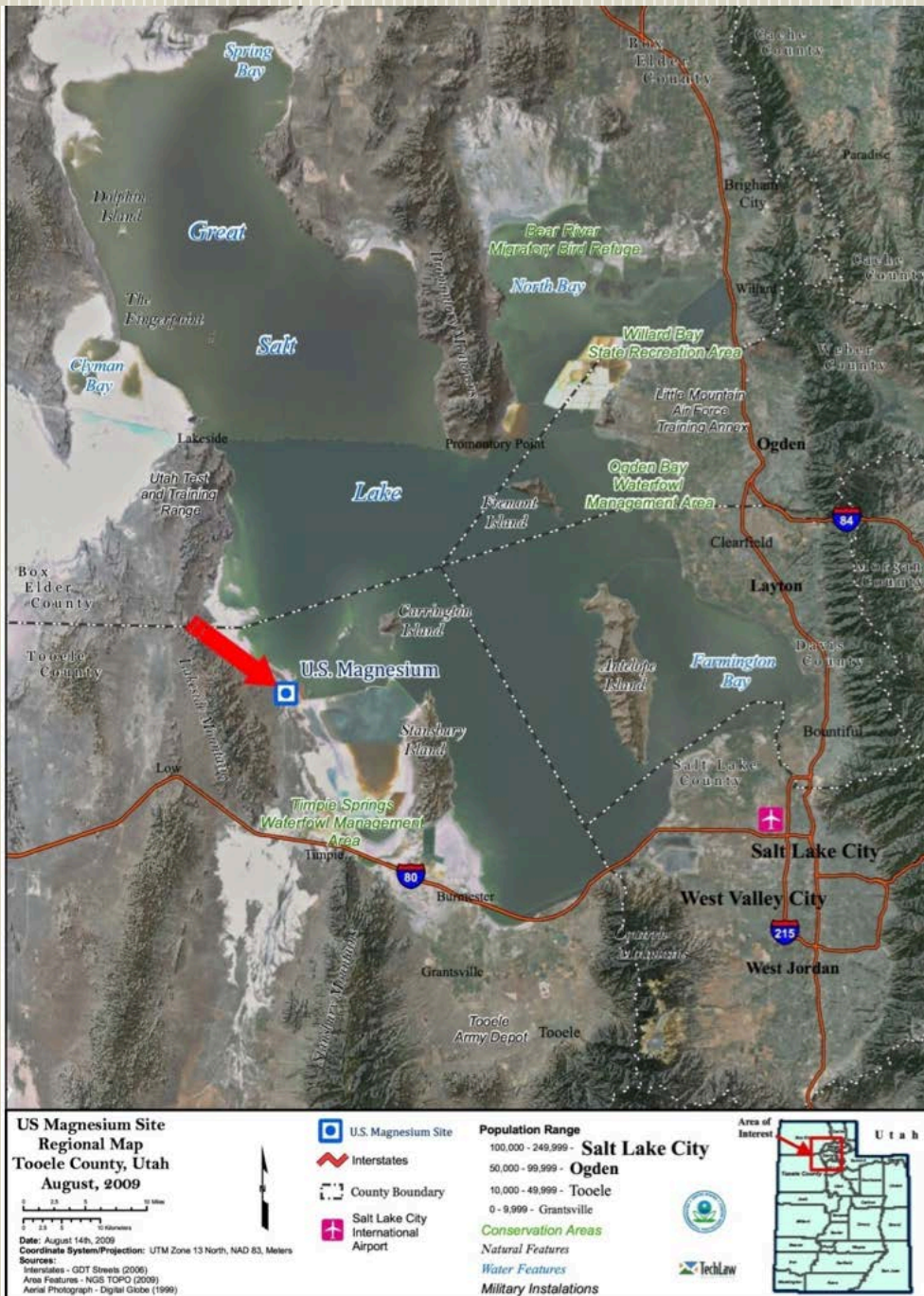
# Goals of CIP



- Inform the public of the progress being made to implement the remedy



# Regional Map of US Magnesium and the surrounding communities



## Tooele County

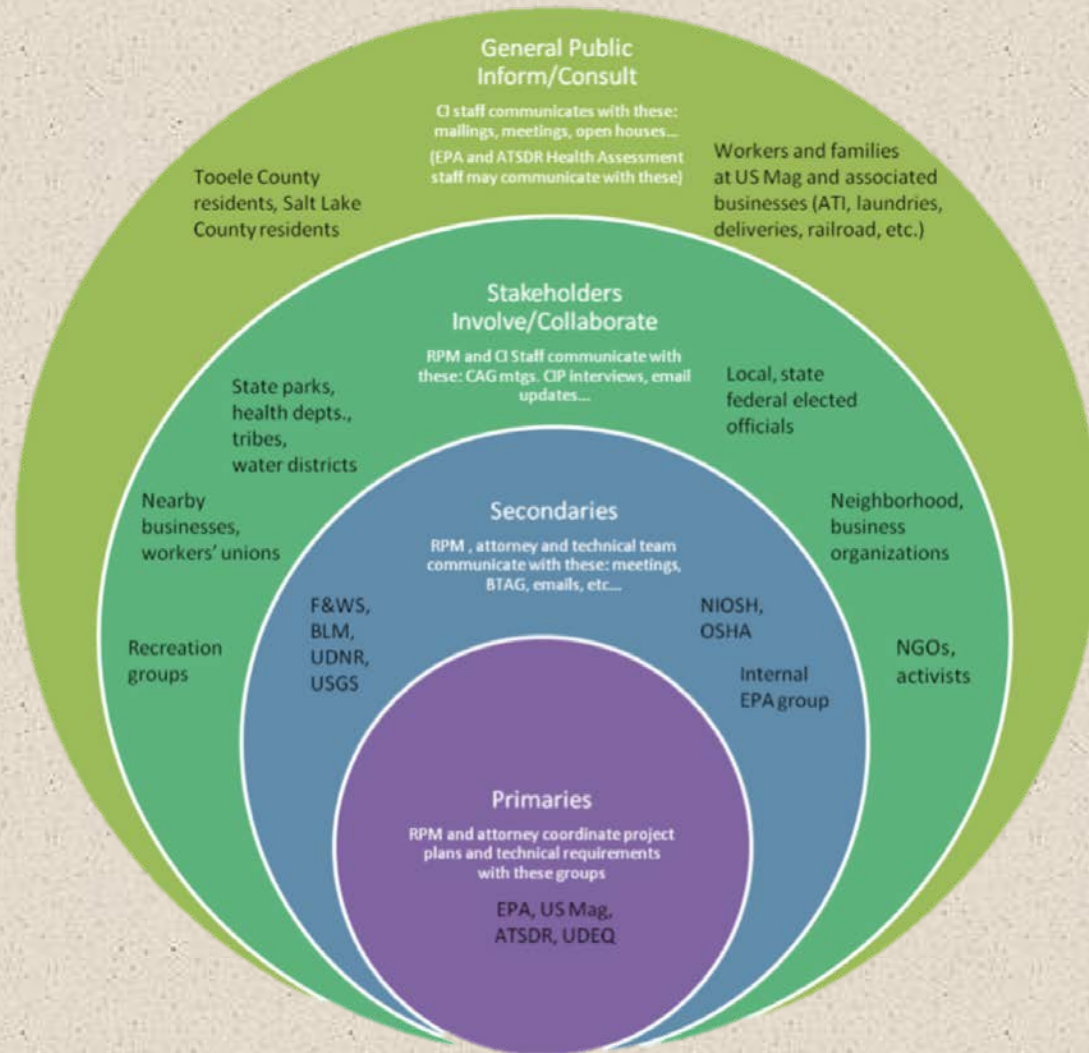
- 7,287 square miles
- Population: 58,218
- Median Income: \$58, 218 (Household)
- Population centers:
  - Tooele (31,605),
  - Grantsville (8,893),
  - Ophir (38),
  - Rush Valley (447),
  - Stockton (616),
  - Vernon (243)
  - Wendover (1,400)

# Interviewees from Community

- EPA identified key stakeholders to interview about US Magnesium Superfund Site
  - Elected officials, interested individuals, community members, union representatives, business owners, interest groups, etc.
  - EPA and UDEQ conducted 19 interviews with 32 individuals



# Stakeholder Levels of Engagement





# Current Knowledge of Site

## Interviewee Concerns

- Most individuals know about U.S. Magnesium facility and potential environmental impacts
  - Broad range of knowledge
  - Some previously involved in addressing environmental impacts
  - Some former employees of the site
- Nearly all interviewees expressed interest in technical details of cleanup plans

## EPA Response

- Committed to working with stakeholders throughout Superfund process
- EPA will employ community involvement tools based on feedback from stakeholders
- EPA will provide technical information as soon as it is available and present it in a way that is easy to interpret and understand



# Environmental Concerns

- Most interviewees familiar with environmental concerns about site
  - Listed as nation's worst air polluter on the EPA Toxic Release Inventory in 1988
  - U.S. Mag reduced chlorine air emissions by 97%





# Environmental Concerns

## Interviewee Concerns

- Chlorine transport via air and groundwater
- Contamination in surrounding environment, Great Salt Lake ecosystem, and brine shrimp/salt industries
- Types of contamination and how far it has spread

## EPA Response

- CERCLA allows the EPA to take a comprehensive evaluation of air, groundwater, surface water, and sediments
- EPA will identify contaminants of particular concern (COPCs) as well as their fate and transport

# Superfund Stigma

## Interviewee Concerns

- Image of the Great Salt Lake
- Efficacy of environmental remediation
- Stigma for Tooele County
- Many residents familiar with government-led environmental cleanups (Tooele Army Depot, Deseret Chemical Depot, & Energy Solutions)

## EPA Response

- All EPA information will be produced with sensitivity to public perception of the Great Salt Lake



# Health Concerns

## Interviewee Concerns

- Health of workers and families— specifically chlorine
- Interest in incidences of cancer and respiratory illness in workers
- Concerns about chlorine contaminating the air
  - Salt Lake Valley
  - Bird and animal species in/ around GSL
- Other contaminants— true extent of health effects

## EPA Response

- CERCLA assessments are more comprehensive
- ERM will prepare risk assessments
- Agency for Toxic Substances and Disease Registry (ASTDR) will conduct public health assessment
  - To what extent people have been exposed
  - Whether that exposure is harmful
  - ASTDR will identify additional steps to protect public health



# Economic Concerns

## Interviewee Concerns

- US Magnesium's importance to local economy
  - Employs 400 people
  - Indirect taxes to county
  - Allegheny Technologies (ATI) depends on US Mag production exclusively
- Superfund process "almost certainly" taking too long and causing job losses
- Long term capability and solvency of the EPA given political climate

## EPA Response

- EPA has no interest in shutting U.S. Magnesium down
- EPA wants to ensure human health and the environment are protected from hazardous substances.
- Many examples of facility operating during Superfund Process while protecting environment



# Remediation Concerns

## Interviewee Concerns

- Lack of local input
- Sample collection logistics
- Interviewees want a cost-effective solution
  - Capping wastes in place, for example

## EPA Response

- ERM will investigate risk-based and cost effective solutions
- EPA will work with stakeholders to discuss sampling approaches

# Communication and Public Outreach

## Interviewee Concerns

- Potentially exposed workers—both past and present
- Community action group
  - Concerns about fair representation from industry and environmental groups
- Desire for email groups, public meetings by EPA
  - Make a “trusted face in community”
  - Government previously not forthcoming with information

## EPA Response

- Most interviewees happy that EPA is investigating risk and cleanup at U.S. Magnesium facilities
- Most interviewees appreciative that EPA conducting interviews and communicate with public
  - Strong support for making EPA info public
  - Clear need to provide different levels of information to different audiences



# Technical Assistance Grant

- Grant of up to \$50,000 given to Friends of Great Salt Lake (FoGSL)
- Can be used to:
  - Hire a technical advisor (us!)
  - Attend approved trainings
  - Obtain relevant supplies and equipment

## Technical Advisor:

Independent expert who can explain technical information and express public's concerns to EPA



FRIENDS of  
Great Salt Lake