

Join Salt Lake City School District and FRIENDS of Great Salt Lake for the

INTERNATIONAL COASTAL CLEANUP

A socially distanced stewardship event to explore and protect our watershed!

The Salt Lake Valley is an important piece of the Great Salt Lake Watershed, a 21,000 square mile basin in which all water flows to the lowest point, Great Salt Lake. Because no rivers flow out of this closed basin, water can only leave the lake by evaporation – leaving behind all of the minerals, sediments, and pollution that flows in. Our place in the Great Salt Lake Watershed means that Salt Lake Valley residents can help protect the health of the lake's ecosystem from harmful trash and pollution.

What: The International Coastal Cleanup focuses on collecting and removing trash pollution from the Great Salt Lake Watershed. We also want to **observe** and **record data** about the type and weight of the trash collected to better understand our impact on our watershed.

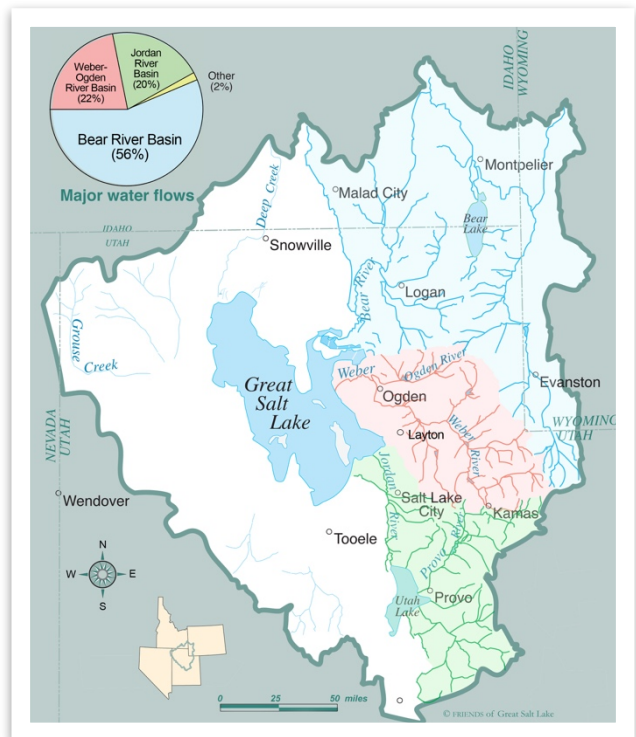
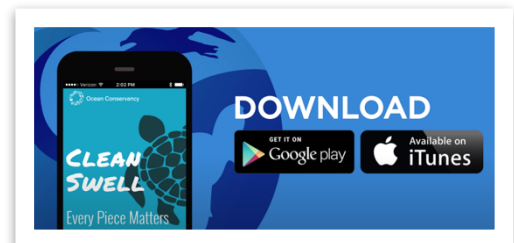
When: September 24-28, 2020 (Thursday-Monday)

Where: Because all waterways in our watershed flow to Great Salt Lake, you can collect trash **anywhere in the Salt Lake Valley!** Whether on the beach of Great Salt Lake, along the Jordan River Parkway, or in runoff gutters along your own street – anywhere you remove trash will improve water quality, wildlife habitat, and the health of the Great Salt Lake ecosystem. Check out our [map of suggested locations](#).

How: You and your family can choose one of the following options.

Option 1: Use the Clean Swell app to record the trash you collect outside.

- Download the [Ocean Conservancy's Clean Swell](#) app, and set up an account.
- Click "Start Collecting", enter your cleanup information, then log your trash as you collect it!
- Note: Your session may close if left inactive for too long.
- When you're done, click "Done Collecting", then review and submit your data!



- Once your data is submitted, send us a screenshot of your results or forward the summary email you'll receive to heron@fogsl.org
- Share a photo with us on our [Facebook event page](#).
- Don't forget to properly dispose of the trash you collected in an appropriate container.



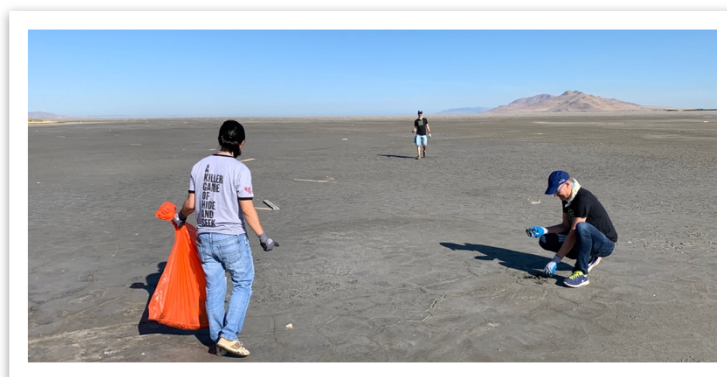
Option 2: Use a paper data sheet to record the trash you collect outside.

- Print out the Trash Collection Data Sheet on the last page of this document.
- During September 24-28, fill in your Data Sheet as you collect trash from local waterways.
- When you're done collecting, use a luggage scale, bathroom scale, or just your best estimate to record the total weight of the trash you collected.
- Scan or take a photo of your completed Data Sheet and send it to us at heron@fogsl.org
- Share a photo with us on our [Facebook event page](#).
- Don't forget to properly dispose of the trash you collected in an appropriate container.

Safety Considerations

- Follow the latest [Salt Lake City health guidelines](#). During the "Orange" or Moderate Risk phase, these guidelines include maintaining 6 feet of distance from individuals who are not part of your household whenever possible and wearing a face covering when social distancing is difficult to maintain consistently.
- Students, if you are leaving home, get permission from your parents and/or guardians.
- Wear gloves or use a tool like a shovel while picking up trash and wash your hands thoroughly when done.
- Do not pick up any items that may be dangerous (broken glass, rusty metal, needles, medications, etc.)
- Be careful of cars if picking up trash near roads.
- Respect living things and private property boundaries wherever you're collecting trash.

This project was developed by Salt Lake City School District Science Department in partnership with FRIENDS of Great Salt Lake and Indian Hills Elementary Science Teacher, Kristen Bonner.





INTERNATIONAL COASTAL CLEANUP

Trash Collection Data Sheet

Name: _____

Date: _____

Group Name: _____

Cleanup Location: _____

Type of Trash Collected Identify each kind of item you pick up.	Count Your Pieces of Trash Write a check or tally mark in this box every time you find this kind of trash.
Example: plastic food wrapper	

Total Weight: _____ Total Items Collected: _____

Send a photo or scan of your completed Data Sheet to heron@fogsl.org